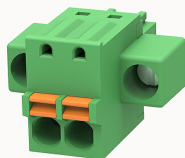


## Overview

### Product information



**15EDGKDM-3.5-10020000172**

Pluggable terminal blocks, Rated current: 12A. Rated voltage  
(III/2) : 250V, Cross section: 1.5mm<sup>2</sup>, pitch: 3.5mm, Color: green, Contact surface  
: Tin

### Product advantages

- ☒ Adapt to multi-type sockets, device design is highly flexible
- ☒ Keying requirements can be met
- ☒ Universal installation method, suitable for various situations

### Product certification



## Technical data

### Product drawing

### 3D model

□

### Connection capacity

Conductor cross section solid	0.2~1.5mm <sup>2</sup>
Conductor cross section flexible	0.2~1.5mm <sup>2</sup>
AWG	28~16AWG
Torque	0.4N.m
Strip length	9mm

### Electrical parameters UL

Rated voltage (B)	300V
Rated voltage (C)	300V

Rated voltage (D)	300V
Rated current (B)	8A
Rated current (D)	8A
Rated current (C)	8A

Electrical parameters IEC

Rated voltage	250V
Rated current	12A
Rated voltage(III/2)	250V
Rated surge voltage(III/2)	2.5KV

Item properties

Connection direction	0°
Connection method	Push-in spring connection
Pitch	3.5mm
Number of potentials	2
Pluggable or not	Yes
Number of rows	1

Material data

Environmental items	Compliant with REACH/RoHS
Contact material	Copper alloy
Contact point metal surface	tin-plated
Contact zone metal surface	tin-plated
Insulation Materials	PA66
Insulating material group	I
Flammability rating	UL94V-0

Mechanical tests

Test Specification	IEC61984/ UL1059
Environmental data	
Ambient temperature (operation)	-40°C~105°C(depending on derating curve)

Accessories

Business data	
Order number	10020000172
Packing unit	200
Minimum order quantity	30
Products weight (without packaging)	2.5574