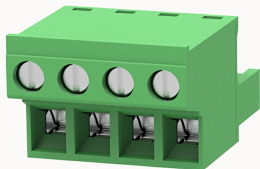


Overview

Product information



2EDGKC-5.08-10010002149

Pluggable terminal blocks, Rated current: 20A. Rated voltage
(III/2) : 320V, pitch: 5.08mm, Color: green, Contact surface : Tin

Product advantages

- ☑ Adapt to multi-type sockets, device design is highly flexible
- ☑ Keying requirements can be met
- ☑ Universal installation method, suitable for various situations

Product certification



Technical data

Product drawing

3D model

□

Connection capacity

Conductor cross section solid	0.2~2.5mm ²
Conductor cross section flexible	0.2~2.5mm ²
AWG	28~12AWG
Torque	0.5N.m
Strip length	10mm

Electrical parameters UL

Rated voltage (B)	300V
Rated voltage (C)	150V
Rated voltage (D)	300V

Rated current (B)	15A
Rated current (D)	10A
Rated current (C)	15A

Electrical parameters IEC

Rated voltage	320V
Rated current	20A
Rated voltage(III/2)	320V
Rated surge voltage(III/2)	4KV

Item properties

Connection direction	90°
Connection method	Screw connection
Screwdriver	Slotted screwdriver
screw thread	M2.5
Pitch	5.08mm
Number of potentials	4
Pluggable or not	Yes
Number of rows	1

Material data

Environmental items	Compliant with REACH/RoHS
Contact material	Copper alloy
Contact point metal surface	tin-plated
Contact zone metal surface	tin-plated
Insulation Materials	PA66
Insulating material group	I
Flammability rating	UL94V-0

Mechanical tests

Test Specification

IEC61984/ UL1059

Environmental data

Ambient temperature (operation)

-40°C~105°C(depending on derating curve)

Accessories

Tool

Screwdriver

0.6x3.5, Slotted screwdriver

Operating tool

/

Accessories

Coding strip

2EDG-PWI

Bridge

DG019-5.0

Marking strip

/

Others

/

Business data

Order number

10010002149

Packing unit

490

Minimum order quantity

Products weight (without packaging)

11.699