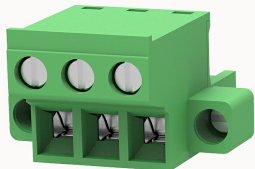


## Overview

### Product information



## 2EDGKCM-5.0-10010002176

Pluggable terminal blocks, Rated current: 20A. Rated voltage  
(III/2) : 320V, pitch: 5.0mm, Color: green, Contact surface : Tin

### Product advantages

- ☒ Adapt to multi-type sockets, device design is highly flexible
- ☒ Keying requirements can be met
- ☒ Universal installation method, suitable for various situations

### Product certification



## Technical data

### Product drawing

### 3D model

□

### Connection capacity

Conductor cross section solid	0.2~2.5mm <sup>2</sup>
Conductor cross section flexible	0.2~2.5mm <sup>2</sup>
AWG	28~12AWG
Torque	0.5N.m
Strip length	10mm

### Electrical parameters UL

Rated voltage (B)	300V
Rated voltage (C)	150V
Rated voltage (D)	300V

Rated current (B)	15A
Rated current (D)	10A
Rated current (C)	15A

#### Electrical parameters IEC

Rated voltage	320V
Rated current	20A
Rated voltage(III/2)	320V
Rated surge voltage(III/2)	4KV

#### Item properties

Connection direction	90°
Connection method	Screw connection
Screwdriver	Slotted screwdriver
screw thread	M2.5
Pitch	5mm
Number of potentials	3
Pluggable or not	Yes
Number of rows	1

#### Material data

Environmental items	Compliant with REACH/RoHS
Contact material	Copper alloy
Contact point metal surface	tin-plated
Contact zone metal surface	tin-plated
Insulation Materials	PA66
Insulating material group	I
Flammability rating	UL94V-0

#### Mechanical tests

Test Specification

IEC61984/ UL1059

#### Environmental data

Ambient temperature (operation)

-40°C~105°C(depending on derating curve)

#### Accessories

##### Tool

Screwdriver

0.6x3.5, Slotted screwdriver

Operating tool

/

##### Accessories

Coding strip

2EDG-PWI

Bridge

DG019-5.0

Marking strip

/

Others

/

#### Business data

Order number

10010002176

Packing unit

390

Minimum order quantity

Products weight (without packaging)

9.716