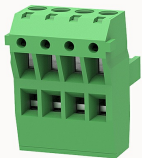


## Overview

### Product information



**2EDGKH-5.08-10010003671**

Pluggable terminal blocks, Rated current: 15A. Rated voltage  
(III/2) : 250V, pitch: 5.08mm, Color: green, Contact surface : Tin

### Product advantages

- ☒ Adapt to multi-type sockets, device design is highly flexible
- ☒ Keying parts can be installed
- ☒ Universal installation method, suitable for various situations

### Product certification



## Technical data

### Product drawing

### 3D model

□

### Connection capacity

Conductor cross section solid	1.0~2.5mm <sup>2</sup>
Conductor cross section flexible	1.0~2.5mm <sup>2</sup>
AWG	28~12AWG
Torque	0.4N.m
Strip length	7mm

### Electrical parameters UL

Rated voltage (B)	300V
Rated voltage (D)	300V
Rated current (B)	10A

Rated current (D)	10A
-------------------	-----

#### Electrical parameters IEC

Rated voltage	250V
Rated current	15A
Rated voltage(III/2)	250V
Rated surge voltage(III/2)	2KV

#### Item properties

Connection direction	0°
Pin arrangement	Single row in a straight line
Connection method	Screw connection
Screwdriver	Slotted screwdriver
screw thread	M2.5
Pitch	5.08mm
Number of potentials	4
Pluggable or not	Yes
Number of rows	1

#### Material data

Environmental items	Compliant with REACH/RoHS
Contact material	Copper alloy
Contact point metal surface	tin-plated
Contact zone metal surface	tin-plated
Insulation Materials	PA66
Insulating material group	I
Flammability rating	UL94V-0

#### Mechanical tests

Test Specification	IEC61984/ UL1059
--------------------	------------------

Environmental data
--------------------

Ambient temperature (operation)	-40°C~105°C(depending on derating curve)
---------------------------------	--

Accessories
-------------

Tool
------

Screwdriver	0.6x3.5, Slotted screwdriver
Operating tool	/

Accessories
-------------

Coding strip	2EDG-PWI
Bridge	DG019-5.0
Marking strip	/
Others	/

Business data
---------------

Order number	10010003671
Packing unit	50
Minimum order quantity	30
Products weight (without packaging)	11.75