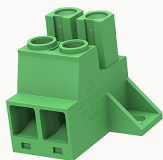


## Overview

### Product information



### 5EDG-STD-10.16-10010002955

Pluggable terminal blocks, Rated current: 57A. Rated voltage  
(III/2) : 1000V, pitch: 10.16mm, Color: green, Contact surface : Tin

### Product advantages

- ☒ Universal connection method to ensure a high degree of flexibility in device design
- ☒ Fixed on the housing or mounting plate by screw connection

### Product certification



## Technical data

### Product drawing

### 3D model

□

### Connection capacity

Conductor cross section solid	0.5~16mm <sup>2</sup>
Conductor cross section flexible	0.5~16mm <sup>2</sup>
AWG	20~6AWG
Torque	2N.m
Strip length	12mm

### Electrical parameters UL

Rated voltage (B)	600V
Rated current (B)	52A

### Electrical parameters IEC

Rated voltage	1000V
Rated voltage(III/3)	1000V
Rated current	57A
Rated voltage(III/2)	1000V
Rated voltage(II/2)	1000V
Rated surge voltage(III/3)	8KV
Rated surge voltage(III/2)	8KV
Rated surge voltage(II/2)	8KV

Item properties

Connection direction	0°
Connection method	Screw connection
Screwdriver	Slotted screwdriver
screw thread	M4.5
Pitch	10.16mm
Number of potentials	2
Pluggable or not	Yes
Number of rows	1

Material data

Environmental items	Compliant with REACH/RoHS
Contact material	copper
Contact point metal surface	Silver plated
Contact zone metal surface	Silver plated
Insulation Materials	PA66
Insulating material group	I
Flammability rating	UL94V-0

#### Mechanical tests

Test Specification

IEC61984/ UL1059

#### Environmental data

Ambient temperature (operation)

-40°C~105°C(depending on derating curve)

#### Accessories

##### Tool

Screwdriver

/

Operating tool

/

##### Accessories

Coding strip

5EDG-PWI

Bridge

/

Marking strip

/

Others

/

#### Business data

Order number

10010002955

Packing unit

105

Minimum order quantity

30

Products weight (without packaging)

14.13