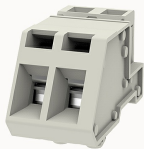


## Overview

### Product information



## 8EDG-STDC-5.0-10020001541

Pluggable terminal blocks, Rated current: 20A. Rated voltage  
(III/3) : 320V, pitch: 5.0mm, Color: gray, Contact surface : Tin

### Product advantages

- ☑ Can achieve 90° transfer connection
- ☑ Cage clamp connection technology, fast wiring
- ☑ Panel or Din rail installation, suitable for various situations

### Product certification



## Technical data

### Product drawing

### 3D model

□

### Connection capacity

Conductor cross section solid	0.2~2.5mm <sup>2</sup>
Conductor cross section flexible	0.2~2.5mm <sup>2</sup>
AWG	22~14AWG
Strip length	7mm

### Electrical parameters UL

Rated voltage (B)	300V
Rated current (B)	15A

### Electrical parameters IEC

Rated voltage	320V
---------------	------

Rated voltage(III/3)	320V
Rated current	20A
Rated surge voltage(III/3)	4KV

#### Item properties

Connection direction	45°
Type of installation	panel
Pin arrangement	Single row in a straight line
Connection method	spring-cage connection
Pitch	5mm
Number of potentials	2
Pluggable or not	Yes
Number of rows	1

#### Material data

Environmental items	Compliant with REACH/RoHS
Contact material	Copper alloy
Contact point metal surface	tin-plated
Contact zone metal surface	tin-plated
Insulation Materials	PA66
Insulating material group	I
Flammability rating	UL94V-0

#### Mechanical tests

Test Specification	IEC61984/ UL1059
--------------------	------------------

#### Environmental data

Ambient temperature (operation)	-40℃~105℃(depending on derating curve)
---------------------------------	--

## Accessories

### Tool

Screwdriver	/
Operating tool	/

### Accessories

Coding strip	/
Bridge	DG018-5.0
Marking strip	/
Others	/

## Business data

Order number	10020001541
Packing unit	150
Minimum order quantity	30
Products weight (without packaging)	3.5