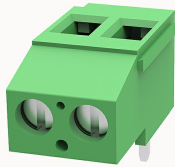


## Overview

## Product information

**DG129R-5.08-10040001787**

PCB terminal blocks, Rated current: 20A, Rated voltage (III/2) 250V, Cross section: 0.5~2.5mm<sup>2</sup>, pitch: 5.08mm, connector method: Screw connector with tension sleeve, Color: green, Contact surface : Tin

## Product advantages

- ☒ Universal installation method to ensure a high degree of flexibility in device design
- ☒ Different poles can be combined through the side lock

## Product certification



## Technical data

## Product drawing

## 3D model

□

## Processing notes

Process

Wave soldering/manual soldering

## Connection capacity

Conductor cross section solid

0.5~2.5mm<sup>2</sup>

Conductor cross section flexible

0.5~2.5mm<sup>2</sup>

AWG

26~12AWG

Torque

0.5N.m

Strip length

8mm

## Electrical parameters UL

Rated voltage (B)	300V
Rated voltage (D)	300V
Rated current (B)	20A
Rated current (D)	10A

Electrical parameters IEC

Rated voltage	250V
Rated current	20A
Rated voltage(III/2)	250V
Rated surge voltage(III/2)	2KV

Item properties

Connection direction	90°
Type of installation	PCB welding
Pin arrangement	Single row in a straight line
Connection method	Screw connection
Screwdriver	Slotted screwdriver
screw thread	M3
Pitch	5.08mm
Number of potentials	2
Pluggable or not	no
Number of rows	1

Material data

Environmental items	Compliant with REACH/RoHS
Contact material	Copper alloy
Contact point metal surface	tin-plated
Insulation Materials	PA66

Insulating material group	I
Flammability rating	UL94V-0
Mechanical tests	
Test Specification	UL1059/IEC60998
Environmental data	
Ambient temperature (operation)	-40°C~105°C(depending on derating curve)

Accessories	
Accessories	
Coding strip	/
Bridge	DG019-5.0
Marking strip	/
Others	/
Tool	
Operating tool	/
Screwdriver	0.6x3.5mm, Slotted screwdriver

Business data	
Order number	10040001787
Packing unit	200
Minimum order quantity	30
Products weight (without packaging)	3.9203