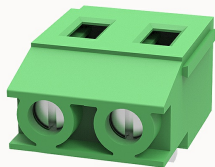


## Overview

### Product information



### DG129R-7.5-10040001789

PCB terminal blocks, Rated current: 20A, Rated voltage (III/2) 450V, Cross section: 0.5~2.5mm<sup>2</sup>, pitch: 7.5mm, connector method: Screw connector with tension sleeve, Color: green, Contact surface : Tin

### Product advantages

- ☒ Universal installation method to ensure a high degree of flexibility in device design
- ☒ Different poles can be combined through the side lock

### Product certification



## Technical data

### Product drawing

### 3D model

□

### Processing notes

Process

Wave soldering/manual soldering

### Connection capacity

Conductor cross section solid

0.5~2.5mm<sup>2</sup>

Conductor cross section flexible

0.5~2.5mm<sup>2</sup>

AWG

26~12AWG

Torque

0.5N.m

Strip length

8mm

### Electrical parameters UL

Rated voltage (B)	300V
Rated voltage (D)	300V
Rated current (B)	20A
Rated current (D)	10A

Electrical parameters IEC

Rated voltage	450V
Rated current	20A
Rated voltage(III/2)	450V
Rated surge voltage(III/2)	2KV

Item properties

Connection direction	90°
Type of installation	PCB welding
Pin arrangement	Single row in a straight line
Connection method	Screw connection
Screwdriver	Slotted screwdriver
screw thread	M3
Pitch	7.5mm
Number of potentials	2
Pluggable or not	no
Number of rows	1

Material data

Environmental items	Compliant with REACH/RoHS
Contact material	Copper alloy
Contact point metal surface	tin-plated
Insulation Materials	PA66

Insulating material group	I
Flammability rating	UL94V-0
Mechanical tests	
Test Specification	UL1059/IEC60998
Environmental data	
Ambient temperature (operation)	-40°C~105°C (depending on derating curve)

Accessories

Accessories	
Coding strip	/
Bridge	/
Marking strip	/
Others	/

Tool	
Operating tool	/
Screwdriver	0.6x3.5mm, Slotted screwdriver

Business data	
Order number	10040001789
Packing unit	200
Minimum order quantity	30
Products weight (without packaging)	4.4244