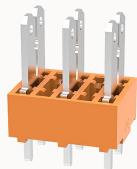


Overview

Product information



DG140V-5.0-10030003081

PCB terminal blocks, Rated current: 24A, Rated voltage (III/2) 630V, Cross section: 2.5mm², pitch: 5.0mm, connector method: Quick plug connector, Color: Orange, Contact surface: Tin

Product advantages

- ☒ Quick plug-in connection, fast wiring
- ☒ The plug direction is perpendicular to PCB
- ☒ Universal installation method to ensure a high degree of flexibility in device design

Product certification

Technical data

Product drawing

3D model

Processing notes

Process

Wave soldering/manual soldering

Connection capacity

Conductor cross section solid

0.5~2.5mm²

Conductor cross section flexible

0.5~2.5mm²

AWG

26~14AWG

Electrical parameters UL

Rated voltage (B)

300V

Rated voltage (D)

300V

Rated current (B)

15A

Rated current (D)	10A
-------------------	-----

Electrical parameters IEC

Rated voltage	630V
Rated current	24A
Rated voltage(III/2)	630V
Rated power frequency voltage(1min)	3KV

Item properties

Connection direction	90°
Type of installation	PCB welding
Pin arrangement	Double-row in a straight line
Connection method	Quick connection
Pitch	5mm
Number of potentials	3
Pluggable or not	no
Number of rows	1

Material data

Environmental items	Compliant with REACH/RoHS
Contact material	Copper alloy
Contact point metal surface	tin-plated
Insulation Materials	PA66
Insulating material group	I
Flammability rating	UL94V-2

Mechanical tests

Test Specification	IEC60998
--------------------	----------

Environmental data

Ambient temperature (operation)	-40°C~85°C(depending on derating curve)
---------------------------------	---

Accessories

Accessories

Coding strip	/
Bridge	/
Marking strip	/
Others	/

Tool

Operating tool	/
Screwdriver	/

Business data

Order number	10030003081
Packing unit	#N/A
Minimum order quantity	30
Products weight (without packaging)	#N/A