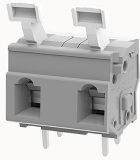


## Overview

## Product information

**DG242R-10.0-10060001833**

PCB spring terminal blocks, Rated current: 17A. Rated voltage  
(III/2) : 1000V, pitch: 10.0mm, Color: gray, Contact surface : Tin

## Product advantages

- ☑ Cage clamp connection technology, fast wiring
- ☑ Different poles can be combined through the side lock
- ☑ Universal installation method to ensure a high degree of flexibility in device design

## Product certification



## Technical data

## Product drawing

## 3D model

□

## Processing notes

Process

Wave soldering/manual soldering

## Connection capacity

Conductor cross section solid

0.2~2.5mm<sup>2</sup>

Conductor cross section flexible

0.2~2.5mm<sup>2</sup>

AWG

28~12AWG

Strip length

6mm

## Electrical parameters UL

Rated voltage (B)

300V

Rated voltage (D)

300V

Rated current (B)	15A
Rated current (D)	10A

#### Electrical parameters IEC

Rated voltage	1000V
Rated current	17A
Rated voltage(III/2)	1000V
Rated power frequency voltage(1min)	3.5KV

#### Item properties

Connection direction	0°
Type of installation	PCB welding
Pin arrangement	Double-row in a straight line
Connection method	spring-cage connection
Pitch	10mm
Number of potentials	2
Pluggable or not	no
Number of rows	1

#### Material data

Environmental items	Compliant with REACH/RoHS
Contact material	Copper alloy
Contact point metal surface	tin-plated
Insulation Materials	PA66
Insulating material group	I
Flammability rating	UL94V-0

#### Mechanical tests

Test Specification	UL1059/IEC60998
Environmental data	
Ambient temperature (operation)	-40°C~105°C(depending on derating curve)

Accessories	
Accessories	
Coding strip	/
Bridge	/
Marking strip	/
Others	/
Tool	
Operating tool	/
Screwdriver	/

Business data	
Order number	10060001833
Packing unit	600
Minimum order quantity	30
Products weight (without packaging)	3.05