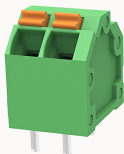


Overview

Product information



DG246-3.81-10060001378

PCB spring terminal blocks, Rated current: 9A. Rated voltage
(III/2) : 160V, pitch: 3.81mm, Color: green, Contact surface : Tin

Product advantages

- ☒ PUSH-IN connection technology, fast wiring
- ☒ 45° connection can realize multi-row layout on PCB
- ☒ Universal installation method, suitable for various situations

Product certification



Technical data

Product drawing

3D model

□

Processing notes

Process

Wave soldering/manual soldering

Connection capacity

Conductor cross section solid

0.2~1.5mm²

Conductor cross section flexible

0.2~1.5mm²

AWG

26~16AWG

Strip length

10mm

Electrical parameters UL

Rated voltage (B)

300V

Rated voltage (D)

300V

Rated current (B)	10A
Rated current (D)	10A

Electrical parameters IEC

Rated voltage	160V
Rated voltage(III/3)	160V
Rated current	9A
Rated voltage(III/2)	160V
Rated voltage(II/2)	320V
Rated surge voltage(III/3)	2.5KV
Rated surge voltage(III/2)	2.5KV
Rated surge voltage(II/2)	2.5KV

Item properties

Connection direction	45°
Type of installation	PCB welding
Pin arrangement	Double-row in a straight line
Connection method	Push-in spring connection
Pitch	3.81mm
Number of potentials	2
Pluggable or not	no
Number of rows	1

Material data

Environmental items	Compliant with REACH/RoHS
Contact material	Copper alloy
Contact point metal surface	tin-plated

Insulation Materials	PA66
Insulating material group	I
Flammability rating	UL94V-0

Mechanical tests

Test Specification	IEC60947/UL 1059
--------------------	------------------

Environmental data

Ambient temperature (operation)	-40°C~105°C(depending on derating curve)
---------------------------------	--

Accessories

Accessories

Coding strip	/
Bridge	/
Marking strip	/
Others	/

Tool

Operating tool	/
Screwdriver	/

Business data

Order number	10060001378
Packing unit	2205
Minimum order quantity	30
Products weight (without packaging)	1.266