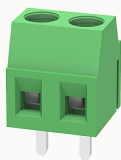


Overview

Product information



DG381-3.81-10040002129

PCB terminal blocks, Rated current: 10A, Rated voltage (III/2) 130V, Cross section: 1.0mm², pitch: 3.81mm, connector method: Screw connector with tension sleeve, Color: green, Contact surface : Tin

Product advantages

- ☒ Fixed screw connection technology, safe and reliable
- ☒ Universal installation method to ensure a high degree of flexibility in device design

Product certification



Technical data

Product drawing

3D model

□

Processing notes

Process

Wave soldering/manual soldering

Connection capacity

Conductor cross section solid

0.5~1.0mm²

Conductor cross section flexible

0.5~1.0mm²

AWG

26~16AWG

Torque

0.2N.m

Strip length

6mm

Electrical parameters UL

Rated voltage (B)	300V
Rated current (B)	10A

Electrical parameters IEC

Rated voltage	130V
Rated current	10A
Rated voltage(III/2)	130V
Rated power frequency voltage(1min)	1.25KV

Item properties

Connection direction	0°
Type of installation	PCB welding
Pin arrangement	Single row in a straight line
Connection method	Screw connection
Screwdriver	Slotted screwdriver
screw thread	M2
Pitch	3.81mm
Number of potentials	2
Pluggable or not	no
Number of rows	1

Material data

Environmental items	Compliant with REACH/RoHS
Contact material	Copper alloy
Contact point metal surface	tin-plated
Insulation Materials	PA66
Insulating material group	I
Flammability rating	UL94V-0

Mechanical tests

Test Specification

UL1059/IEC60998

Environmental data

Ambient temperature (operation)

-40°C~105°C(depending on derating curve)

Accessories

Accessories

Coding strip

/

Bridge

DG032-3.81

Marking strip

/

Others

/

Tool

Operating tool

/

Screwdriver

0.4x2.5mm, Slotted screwdriver

Business data

Order number

10040002129

Packing unit

1500

Minimum order quantity

30

Products weight (without packaging)

1.07