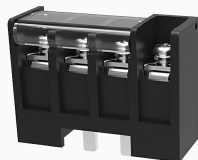


Overview

Product information



DG1450H-B-20A(H)-12010000014

Single-layer PCB barrier terminal blocks, Rated current: 57A. Rated voltage (UL) : 600V, Cross section: 22~8AWG, pitch: 14.5mm, Color: black, Contact surface: Tin

Product advantages

- ☒ Screw connection for worldwide use
- ☒ Fence type wiring structure, stable and reliable connection
- ☒ High current electrical connections at the power end can be met

Product certification



Technical data

Product drawing

3D model

□

Processing notes

Process

Wave soldering/manual soldering

Connection capacity

Conductor cross section solid

0.5~16mm²

Conductor cross section flexible

0.5~16mm²

AWG

22~6AWG

Electrical parameters UL

Rated voltage (B)

600V

Rated voltage (C)

600V

Rated voltage (D)	600V
Rated current (B)	57A
Rated current (D)	5A
Rated current (C)	57A

Electrical parameters IEC

Rated current	1000V
	57A

Item properties

Type of installation	PCB welding
Pin arrangement	Single row in a straight line
Connection method	Screw connection
Screwdriver	slotted-phillips screwdriver
screw thread	M5
Pitch	14.5mm
Number of potentials	4
Pluggable or not	no
Number of rows	1

Material data

Environmental items	Compliant with REACH/RoHS
Contact material	Copper alloy
Contact point metal surface	tin-plated
Insulation Materials	PBT
Insulating material group	IIIa
Flammability rating	UL94V-0

Mechanical tests

Test Specification	UL1059
Environmental data	
Ambient temperature (operation)	-40°C~125°C(depending on derating curve)

Accessories
Accessories

Business data	
Order number	12010000014
Packing unit	15
Minimum order quantity	/
Products weight (without packaging)	85.9