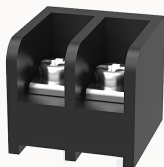


Overview

Product information



DG16S-B-12030000002

Single-layer PCB barrier terminal blocks, Rated current: 10A. Rated voltage (UL) : 300V, Cross section: 22-16AWG, pitch: 6.35mm, Color: black, Contact surface : Tin

Product advantages

- ☒ Screw connection for worldwide use
- ☒ Fence type wiring structure, stable and reliable connection
- ☒ Solder plate mounting for electrical connection of the device to the PCB

Product certification



Technical data

Product drawing

3D model

□

Processing notes

Process

Wave soldering/manual soldering

Connection capacity

AWG

22~16AWG

Torque

0.4N.m

Electrical parameters UL

Rated voltage (B)

300V

Rated voltage (C)

150V

Rated voltage (D)

300V

Rated current (B)	10A
Rated current (D)	10A
Rated current (C)	10A

Electrical parameters IEC

Rated current	300V
	17.5A

Item properties

Type of installation	PCB welding
Pin arrangement	Single row in a straight line
Connection method	Screw connection
Screwdriver	slotted-phillips screwdriver
screw thread	M2.5
Pitch	6.35mm
Number of potentials	2
Pluggable or not	no
Number of rows	1

Material data

Environmental items	Compliant with REACH/RoHS
Contact material	Copper alloy
Contact point metal surface	tin-plated
Insulation Materials	PA66
Insulating material group	I
Flammability rating	UL94V-0

Mechanical tests

Test Specification	UL1059
--------------------	--------

Environmental data

Ambient temperature (operation)	-40°C~105°C(depending on derating curve)
---------------------------------	--

Accessories

Accessories

--	--

Business data

Order number	12030000002
Packing unit	200
Minimum order quantity	/
Products weight (without packaging)	2.5