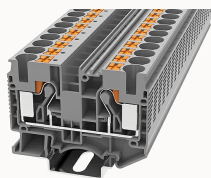


Overview

Product information



DS10-11040000001

Push-in Din-Rail TB, connector method: Push-in connector, Rated voltage : 1000 V, Rated current : 57 A, Number of connectors: 2, Number of potentials: 1, Cross section: 0.5 mm² - 16 mm², AWG: 20 - 6, Width: 10.2 mm, Color: gray, Mounting type: NS35/7.5, NS35/15

Product advantages

- ☑ Push-in connection technology, tool-free operation, more convenient and faster;
- ☑ With orange wire button, one word or cross screwdriver can release wire.
- ☑ Equipped with dual-channel bridge wells, circuit connection testing is more flexible.
- ☑ Unique plug-in bridge, high circuit connection efficiency.
- ☑ Optional marker to avoid wire mis-inserting.
- ☑ Equipped with test holes for easy testing of the circuit.

Product certification



Technical data

Product drawing

3D model

□

UL Electrical parameters

Rated voltage	600V
Rated current	60A

Wiring data

Conductor cross section flexible (ferrule without plastic sleeve)	0.5-10mm ²
Conductor cross section flexible (ferrule with plastic sleeve)	0.5-10mm ²
2 flexible conductors with a TWIN ferrule	1.5-4mm ²

Strip length	16~18mm
Conductor cross section solid	0.5~16mm ²
Conductor cross section flexible	0.5~10mm ²
Conductor cross section solid AWG	20~6

Environmental conditions

Ambient temperature (storage / transport)	-25℃~60℃
Ambient temperature (operation)	-40 °C ~ 105 °C (depending on derating curve)
Relative humidity (storage/transport)	25%~75%

IEC Electrical parameters

Rated voltage (III / 3)	1000V
Rated current (III / 3)	57A
Rated surge voltage	8KV

Safety test

Anti-finger touch	Passed the test
-------------------	-----------------

Mechanical performance test

Mechanical strength	Passed the test
Fixing support	Passed the test
Rotational Pull Test	Passed the test

Environmental protection

REACH SVHC	Lead 7439-92-1
RoHS	No excessive harmful substances

Electrical performance test

Voltage drop	≤3.2mV
Temperature rise test	≤45 K

Dimension

Height	43.6mm
NS 35/7,5 Height	51.1mm
End plate width	1.5mm
NS 35/15 Height	58.6mm
length	67.7mm
width	10.2mm

Overview

Insulating material group	I
standard test	IEC60947-7-1
Connection type	In line connection
Number of rows	1
number of connections	2
Open-end side panels	Yes
Insulation Materials	PA
Flame retardant grade, in line with UL 94	V0

Accessories

Marker

Top marker	ZB10 / ZS10
Side marker	ZSF10
Marker support	DTH5-25x5 / DTH5-25x12

Accessories

Slotted screwdriver size (Blade thickness x Width) mm	1x5.5
Bridge	DFBXX-10.2
End cover	D-DS10

Installation

End clamp	E-WS N / E-PC-1100A
Terminal strip marker support	KLM3-20x8 / KLM3-44x8 / DBE-1 / DBE-2
DIN rail	NS35/7.5-1000-00A(H)

Business data

Order number	11040000001
Packing unit	20
Minimum order quantity	20
Products weight (without packaging)	24.638