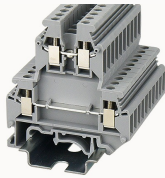


Overview

Product information

**PCKK2.5-11010000123**

Screw type Din-Rail TB, connector method: Screw/plug-in connector, Rated voltage: 500 V, Rated current: 24 A, Number of connectors: 4, Number of potentials: 1, Cross section: 0.2 mm² - 2.5 mm², AWG: 24 - 12, Width: 5.2 mm, Color: gray, Mounting type: NS 35/7.5, NS 35/15

Product advantages

- ☒ Screw connection technology, reliable connection;
- ☒ Equipped with fixed parts and bridge parts, circuit connection test is more flexible;
- ☒ Copper alloy material, good corrosion resistance;
- ☒ Can be matched with marker strips to avoid incorrect insertion of wires.

Product certification



Technical data

Product drawing

3D model

[□](#)

Overview

Number of rows	2
number of connections	4
Open-end side panels	Yes
Insulation Materials	PA
Flame retardant grade, in line with UL 94	V0
Insulating material group	I
standard test	IEC60947-7-1
Connection method	screw connection

Dimension	
width	5.2mm
End plate width	2.5mm
Height	60.7mm
NS 35/7,5 Height	61.95mm
NS 35/15 Height	69.45mm
length	56mm
Wiring data	
Strip length	8~9mm
Conductor cross section solid AWG	24~12
Conductor cross section solid	0.2~2.5mm ²
Conductor cross section flexible	0.2~2.5mm ²
Conductor cross section flexible (ferrule without plastic sleeve)	0.2-2.5mm ²
2 flexible conductors with a TWIN ferrule	0.5-0.75mm ²
Screw type	Slotted screw
screw thread	M3
Tightening torque	0.5N.m
IEC Electrical parameters	
Rated voltage (III / 3)	500V
Rated current (III / 3)	24A
Rated surge voltage	6KV
UL Electrical parameters	
Rated voltage	300V
Rated current	20A
Environmental conditions	

Ambient temperature (operation)	-40 °C ~ 105 °C (depending on derating curve)
Relative humidity (storage/transport)	25%~75%
Ambient temperature (storage / transport)	-25°C~60°C

Mechanical performance test

Mechanical strength	Passed the test
Fixing support	Passed the test
Rotational Pull Test	Passed the test

Electrical performance test

Voltage drop	≤3.2mV
Temperature rise test	≤45 K

Safety test

Anti-finger touch	Passed the test
-------------------	-----------------

Environmental protection

RoHS	No excessive harmful substances
REACH SVHC	Lead 7439-92-1

Accessories

Accessories

Slotted screwdriver size (Blade thickness x Width)	0.6×3.5
Fixed bridge	FBRIXX-5
Insertion bridge	EB2-5 / EB3-5 / EB10-5
End cover	D-PCKK2.5
Separating disk	TS-KK3
Partition plate	/
Compensation plate	DP-PCKK2.5

Marker

Top marker	/
Marker	ZB5
Marker support	/

Installation

End clamp	E-WS N / E-PC-1100A
Terminal strip marker support	KLM3-20x8 / KLM3-44x8 / DLM2 / DBE-1 / DBE-2
DIN rail	NS35/7.5 & NS35/15

Marking & Installation

Marking strip	ZB5
Marker cards	DBE-1

Accessories

End cover	D-PCKK2.5
Compensation plate	DP-PCKK2.5
Grouping Partition plate	TS-KK3
Bridge	FBRXX-5
End clamp	E-WS
DIN rail	NS35/7.5-1000-00A(H)

Business data

Order number	11010000123
Packing unit	50
Minimum order quantity	50
Products weight (without packaging)	12.107

