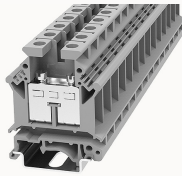


## Overview

## Product information

**PC16-11010000020**

Screw type Din-Rail TB, connector method: Screw/plug-in connector, Rated voltage: 800 V, Rated current: 76 A, Number of connectors: 2, Number of potentials: 1, Cross section: 0.2 mm<sup>2</sup> - 16 mm<sup>2</sup>, AWG: 12 - 4, Width: 12.2 mm, Color: gray, Mounting type: NS 35/7.5, NS 35/15

## Product advantages

- ☑ Screw connection technology, reliable connection;
- ☑ Equipped with fixed parts and bridge parts, circuit connection test is more flexible;
- ☑ Copper alloy material, good corrosion resistance;
- ☑ Can be matched with marker strips to avoid incorrect insertion of wires.

## Product certification



## Technical data

## Product drawing

## 3D model

[□](#)

## Overview

Number of rows	1
number of connections	2
Open-end side panels	Yes
Insulation Materials	PA
Flame retardant grade, in line with UL 94	V0
Insulating material group	I
standard test	IEC60947-7-1
Connection method	screw connection

Dimension

width	12.2mm
End plate width	1.5mm
Height	52.8mm
NS 35/7,5 Height	54.05mm
NS 35/15 Height	61.55mm
length	42.5mm

Wiring data

Strip length	11~12mm
Conductor cross section solid AWG	12~4
Conductor cross section solid	0.2~16mm <sup>2</sup>
Conductor cross section flexible	0.2~16mm <sup>2</sup>
Conductor cross section flexible (ferrule with plastic sleeve)	0.2-16mm <sup>2</sup>
Screw type	Slotted screw
screw thread	M4
Tightening torque	1.2N.m

IEC Electrical parameters

Rated voltage (III / 3)	800V
Rated current (III / 3)	76A
Rated surge voltage	8KV

UL Electrical parameters

Rated voltage	600V
Rated current	85A

Environmental conditions

Ambient temperature (operation)	-40 °C ~ 105 °C (depending on derating curve)
Relative humidity (storage/transport)	25%~75%
Ambient temperature (storage / transport)	-25°C~60°C

#### Mechanical performance test

Mechanical strength	Passed the test
Fixing support	Passed the test
Rotational Pull Test	Passed the test

#### Electrical performance test

Voltage drop	≤3.2mV
Temperature rise test	≤45 K

#### Safety test

Anti-finger touch	Passed the test
-------------------	-----------------

#### Environmental protection

RoHS	No excessive harmful substances
REACH SVHC	Lead 7439-92-1

### Accessories

#### Accessories

Slotted screwdriver size (Blade thickness x Width)	1×4
Fixed bridge	FBIX-12
Insertion bridge	EB2-12 / EB3-12 / EB10-12
End cover	D-PC16
Separating disk	TS-K
Partition plate	ATP-PC

#### Marker

Top marker	/
Marker	ZT12
Marker support	/

#### Installation

End clamp	E-WS N / E-PC-1100A
Terminal strip marker support	KLM3-20x8 / KLM3-44x8 / DLM2 / DBE-1 / DBE-2
DIN rail	NS35/7.5 & NS35/15

#### Marking & Installation

Marking strip	ZB10
Marker cards	DBE-1

#### Accessories

End cover	D-PC16
Grouping Partition plate	TS-K
Partition plate	ATP-PC
Bridge	FBIXX-12
End clamp	E-WS
DIN rail	NS35/7.5-1000-00A(H)

#### Business data

Order number	11010000020
Packing unit	50
Minimum order quantity	50
Products weight (without packaging)	21.254