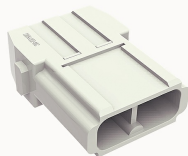


Overview

Product information



DMK-002-MC-21020000080

Heavy-duty insert, Number of contacts: 2, Dimension: 1 module Spaces, Rated voltage : 1000V, Rated current: 40A, Male insert, Crimping connector

Product advantages

- ☑ Crimping connection technology, applicable to a wide range of wire specifications ;
- ☑ Modular products, easy to assemble and maintain .

Product certification



Technical data

Product drawing

3D model

□

Marking

classification	Insert
Series	DM

versions

Connection method	Crimping connection
Female/Male	Male
Dimension	1 module
Number of positions	2
PE Contacts	No

Material characteristics

Material (insert)	Polycarbonate (PC)
Materia (Contact)	Copper alloy
Surface (Contact)	Silver plated/gold plated
Flammability rating	V-0
color	Grey/White (RAL 7032)
RoHS	Comply with RoHS exemptions

Electrical parameters

Rated current	40A
	1000V
Rated pulse voltage	8KV
Pollution level	3
On the basis of UL /CSARated current	600V
Insulation resistance	≥10000MΩ
Contact resistance	≤0.3mΩ
Temperature range	-40℃~+125℃
working life-mating cycles	≥500 time
Conductor cross sections (mm²)	1.5-10mm²
Conductor cross sections(AWG)	16-8AWG

Standards

Connection meets standards	DIN EN 60664 DIN EN 61984
----------------------------	---------------------------

Accessories

Accessories

Crimping tool Removal tool	/
----------------------------	---

Business data	
Order number	21020000080
Packing unit	100
Minimum order quantity	5
Products weight (without packaging)	12.16