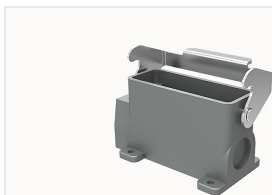


## Overview

### Product information



**D16A-SF-1L-PG16-21010000475**

16A Lower base,single buckle,back cover ,side entry,PG16 Thread hole

### Product advantages

- ☑Metal or high-strength plastic material, resistant to high-strength mechanical shock;
- ☑Various installation methods and outlet directions to meet on-site wiring requirements;
- ☑Snap-in combination structure, dustproof, waterproof, easy operation;

### Product certification

## Technical data

### Product drawing

### 3D model

□

### Marking

|                |                    |
|----------------|--------------------|
| classification | Upper Housing/base |
| Series         | A                  |
| Type           | Surface mount base |
| Specification  | Low structure      |

### versions

|                      |             |
|----------------------|-------------|
| Dimension            | 16A         |
| locking Category     | Single lock |
| Thread specification | 1x PG16     |

### Material characteristics

|                               |                          |
|-------------------------------|--------------------------|
| Flammability rating           | V-0                      |
| RoHS                          | conform                  |
| Material (upper housing/base) | Die-cast aluminium alloy |
| Material(upper housing/base)  | spray                    |
| Color (upper housing/base)    | Grey (RAL 7037)          |
| Material (seal)               | NBR                      |
| Material (lock catch)         | Zinc plated              |

Technical specification

|                       |            |
|-----------------------|------------|
| Limiting temperatures | -40℃~+125℃ |
| IP class              | IP65       |

Accessories

Business data

|                                     |             |
|-------------------------------------|-------------|
| Order number                        | 21010000475 |
| Packing unit                        | 100         |
| Minimum order quantity              | 1           |
| Products weight (without packaging) | 206.4       |