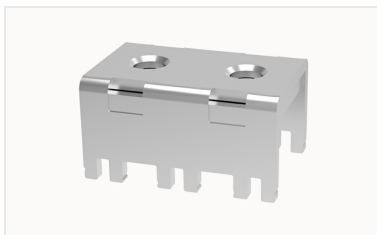


## Overview

### Product information



**K59-00A(H)-109000000084**

Metal Part,nominal current:269A,screw thread Specification:M6>Contact surface:Tin

### Product advantages

- ☒ Screw connection, strong reliability
- ☒ Technology of integrated nut, excellent torque
- ☒ Suitable for in-unit installation

### Product certification

## Technical data

### Product drawing

### 3D model

□

### Processing notes

Process

Wave soldering/manual soldering

### Connection capacity

Torque

3.5N.m

### Item properties

Type of installation

PCB welding

Connection method

Screw connection

screw thread

M6

Number of potentials

1

Pluggable or not

no

### Material data

Environmental items	Compliant with REACH/RoHS
Contact material	Copper alloy
Contact zone metal surface	tin-plated

Accessories

Business data	
Order number	10900000084
Packing unit	50
Minimum order quantity	
Products weight (without packaging)	38.02