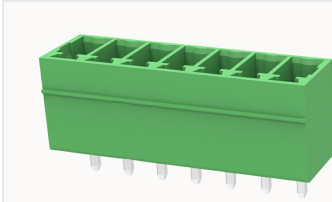


Overview

Product information

**15EDGVC-3.5-10030000684**

Pluggable Terminal Blocks nominal current 7A. Rated voltage (II/2):
250V, pitch: 3.5mm, Color: green, Contact surface: Tin

Product advantages

- ✓ Universal installation method to ensure a high degree of flexibility in device design
- ✓ The plug direction is perpendicular to PCB

Product certification



Technical data

Product drawing

3D model

[□](#)

Processing notes

Process

Wave soldering/manual soldering

Electrical parameters UL

| | |
|-------------------|------|
| Rated voltage (B) | 300V |
| Rated voltage (D) | 300V |
| Rated current (B) | 8A |
| Rated current (D) | 8A |

Electrical parameters IEC

| | |
|---------------|------|
| Rated voltage | 250V |
| Rated current | 7A |

| | |
|---------------------------|-------|
| Rated voltage(II/2) | 250V |
| Rated surge voltage(II/2) | 2.5KV |

Item properties

| | |
|----------------------|-------------------------------|
| Connection direction | 90° |
| Type of installation | PCB welding |
| Pin arrangement | Single row in a straight line |
| Pitch | 3.5mm |
| Number of potentials | 7 |
| Pluggable or not | Yes |
| Number of rows | 1 |

Material data

| | |
|-----------------------------|---------------------------|
| Environmental items | Compliant with REACH/RoHS |
| Contact material | Copper alloy |
| Contact point metal surface | tin-plated |
| Contact zone metal surface | tin-plated |
| Insulation Materials | PA66 |
| Insulating material group | I |
| Flammability rating | UL94V-0 |

Mechanical tests

| | |
|--------------------|------------------|
| Test Specification | IEC61984/ UL1059 |
|--------------------|------------------|

Environmental data

| | |
|---------------------------------|--|
| Ambient temperature (operation) | -40℃~105℃(depending on derating curve) |
|---------------------------------|--|

Accessories

| |
|------|
| Tool |
|------|

| | |
|----------------|---|
| Screwdriver | / |
| Operating tool | / |

Accessories

| | |
|---------------|-----------|
| Coding strip | / |
| Bridge | / |
| Marking strip | / |
| Others | 15EDG-PWI |

Business data

| | |
|-------------------------------------|-------------|
| Order number | 10030000684 |
| Packing unit | |
| Minimum order quantity | |
| Products weight (without packaging) | |