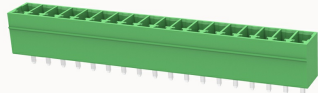


## Overview

## Product information

**15EDGVC-3.5-10030000694**

Pluggable Terminal Blocks nominal current 7A. Rated voltage (II/2):  
250V, pitch: 3.5mm, Color: green, Contact surface: Tin

## Product advantages

- ✓ Universal installation method to ensure a high degree of flexibility in device design
- ✓ The plug direction is perpendicular to PCB

## Product certification



## Technical data

## Product drawing

## 3D model

[□](#)

## Processing notes

Process

Wave soldering/manual soldering

## Electrical parameters UL

Rated voltage (B)	300V
Rated voltage (D)	300V
Rated current (B)	8A
Rated current (D)	8A

## Electrical parameters IEC

Rated voltage	250V
Rated current	7A

Rated voltage(II/2)	250V
Rated surge voltage(II/2)	2.5KV

Item properties

Connection direction	90°
Type of installation	PCB welding
Pin arrangement	Single row in a straight line
Pitch	3.5mm
Number of potentials	18
Pluggable or not	Yes
Number of rows	1

Material data

Environmental items	Compliant with REACH/RoHS
Contact material	Copper alloy
Contact point metal surface	tin-plated
Contact zone metal surface	tin-plated
Insulation Materials	PA66
Insulating material group	I
Flammability rating	UL94V-0

Mechanical tests

Test Specification	IEC61984/ UL1059
--------------------	------------------

Environmental data

Ambient temperature (operation)	-40℃~105℃(depending on derating curve)
---------------------------------	--

Accessories

Tool

Screwdriver	/
Operating tool	/

Accessories

Coding strip	/
Bridge	/
Marking strip	/
Others	15EDG-PWI

Business data

Order number	10030000694
Packing unit	
Minimum order quantity	
Products weight (without packaging)	