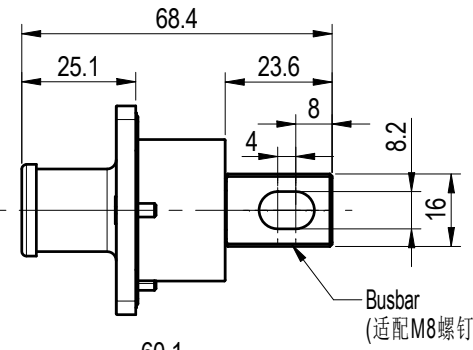
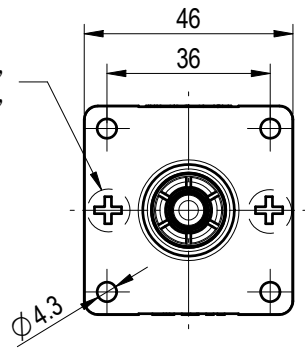


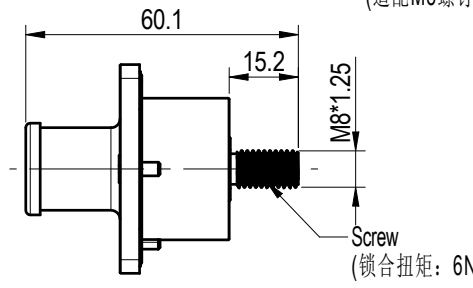
尺寸公差(mm)					0.05/10 ±1'
0	>30	>60	>100	>150	
~30	~60	~100	~150	>150	
±0.20	±0.30	±0.50	±0.70	±1.00	

正极“+”  
负极“-”



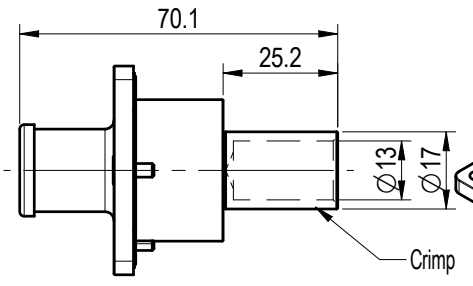
Busbar  
(适配M8螺钉扭矩: 6N.m)

其他接线方式: 形式一:



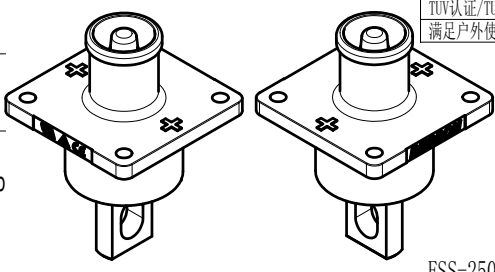
Screw  
(锁合扭矩: 6N.m)

形式二:



Crimp

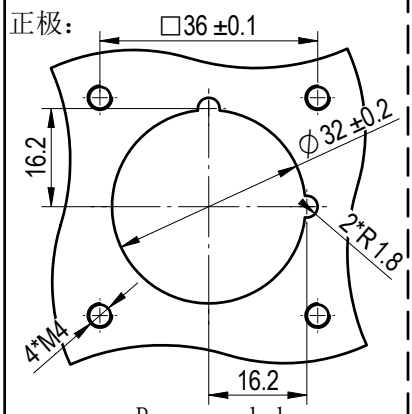
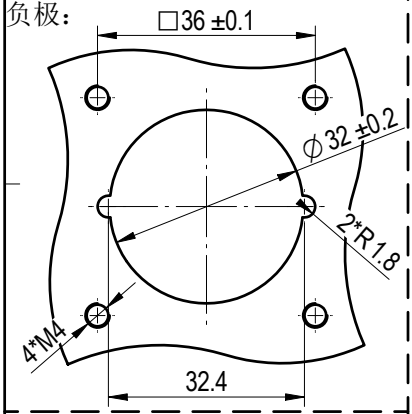
仅Busbar的形式3D展示:



ESS-250A-70-X-XX-00

Color: BK : Black 负极  
OR : Orange 正极  
RD : Red 正极

Contact Termination: B : Busbar  
C : Crimp  
S : Screw  
B/S : Copper Screw



Recommended  
Panel Cut-Out

REV	ECN	DESCRIPTION	DRFT	DATE
01				

		MATERIAL:	SURFACE/COLOR:		
APPD: 刘剑 2024.01.24		MAT NO./REV:	MAT STATUS:		
CHKD: 于进海 2024.01.21		NAME			
DRFT: 张晓璐 2021.01.17		ESS-250A-70-XX-XX-00			
DRAWING NO. 200269869		TYPE CUSTOMER DRAWING		DRAWING STATUS	SHEET 1/1

Transfer or duplication of this document as well as the utilization or communication of its content are prohibited unless authorized in writing by the copyright holder. All rights reserved for patent. 未经授权复制或传播本文件内容，以及利用其内容或进行任何形式的信息交流，均属于侵权行为。本公司保留对侵权行为的追究权利。